

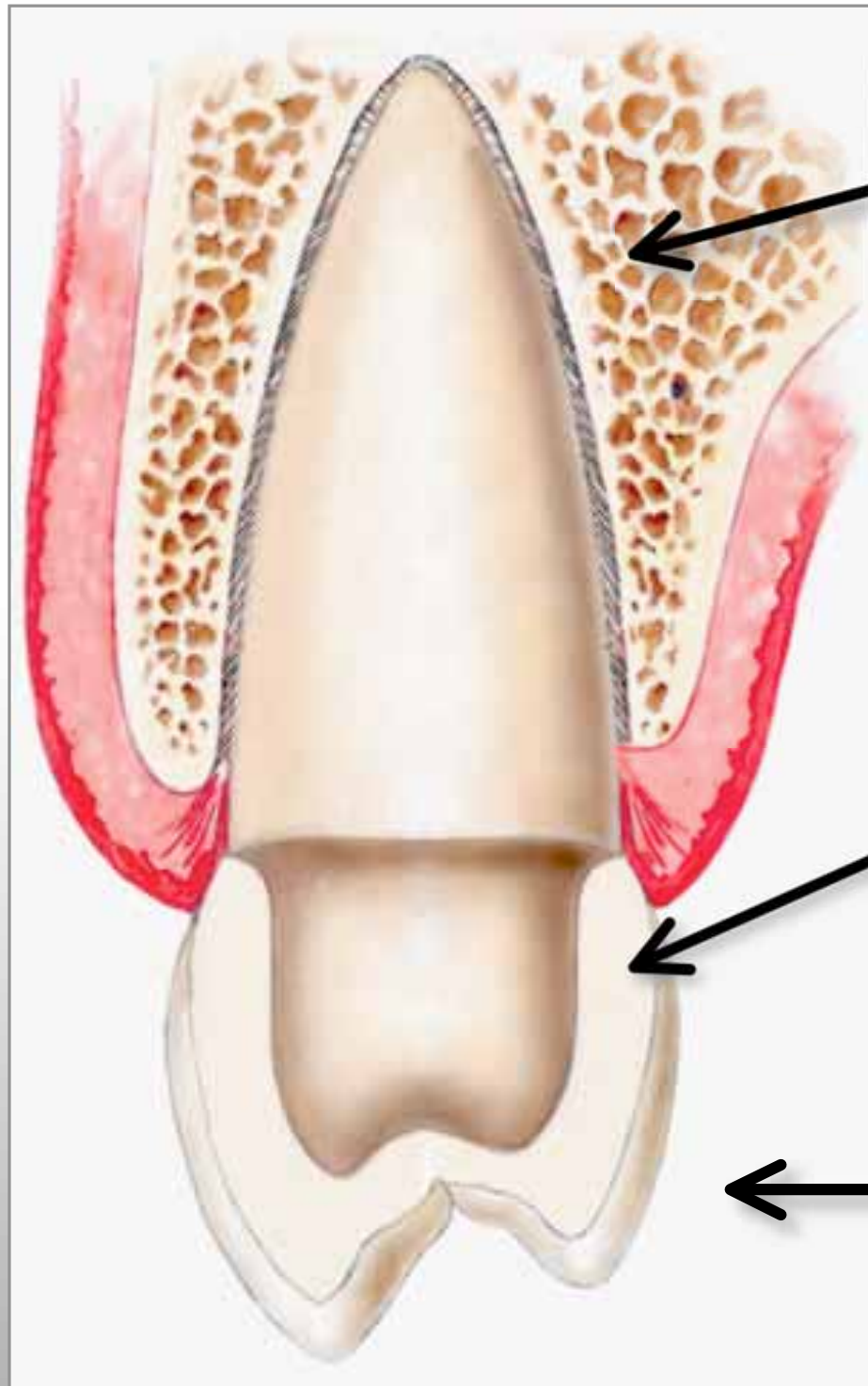
Restoring the Confidence of Your Natural Smile

Replacing Missing Teeth With Dental Implants

What are dental implants?



Dental implants are little titanium screws which make the function of the tooth root , and may be used to replace one or multiple missing teeth. They are surgically placed into jaws in an in-office procedure.

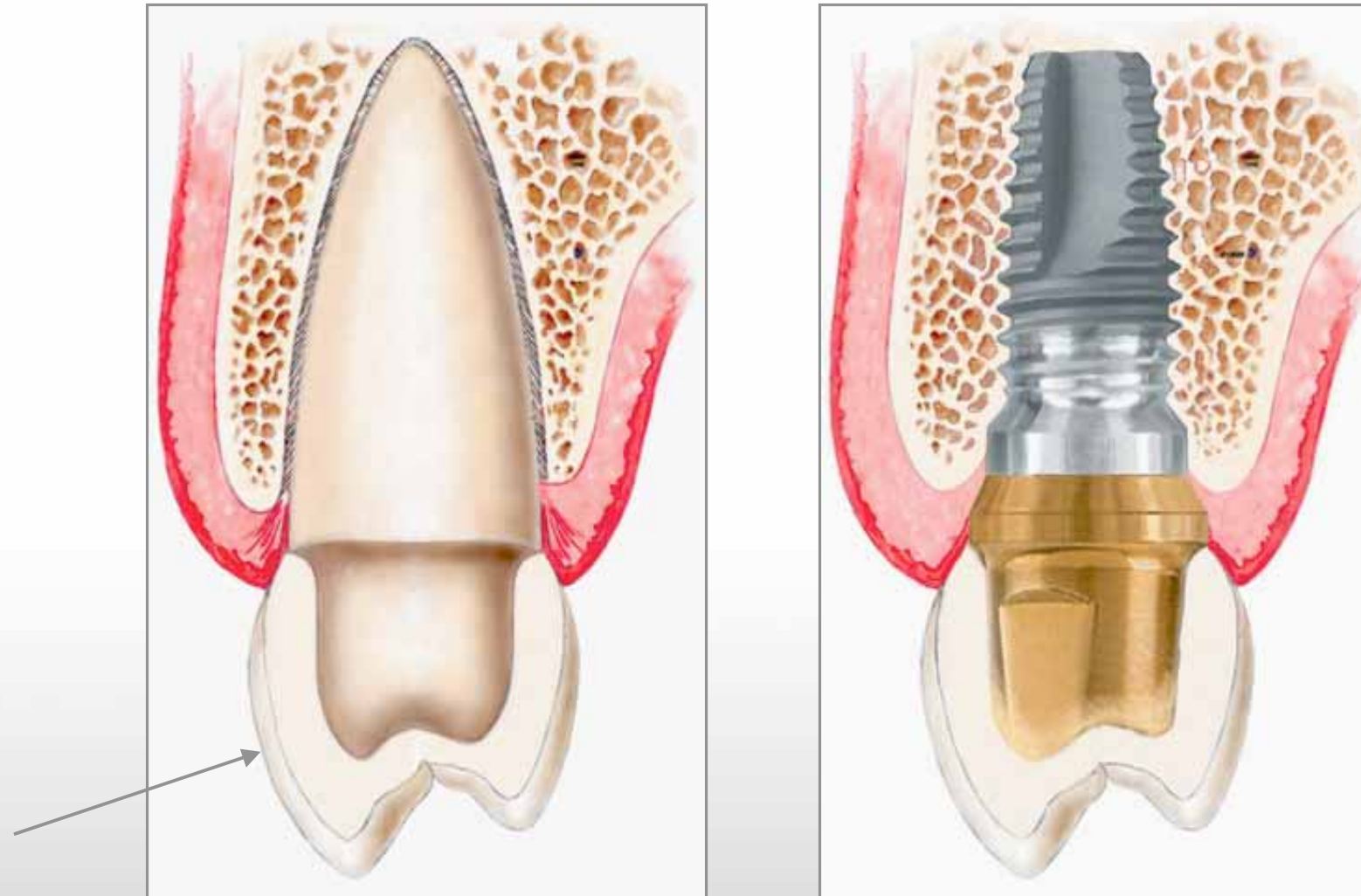


A natural tooth in the jawbone

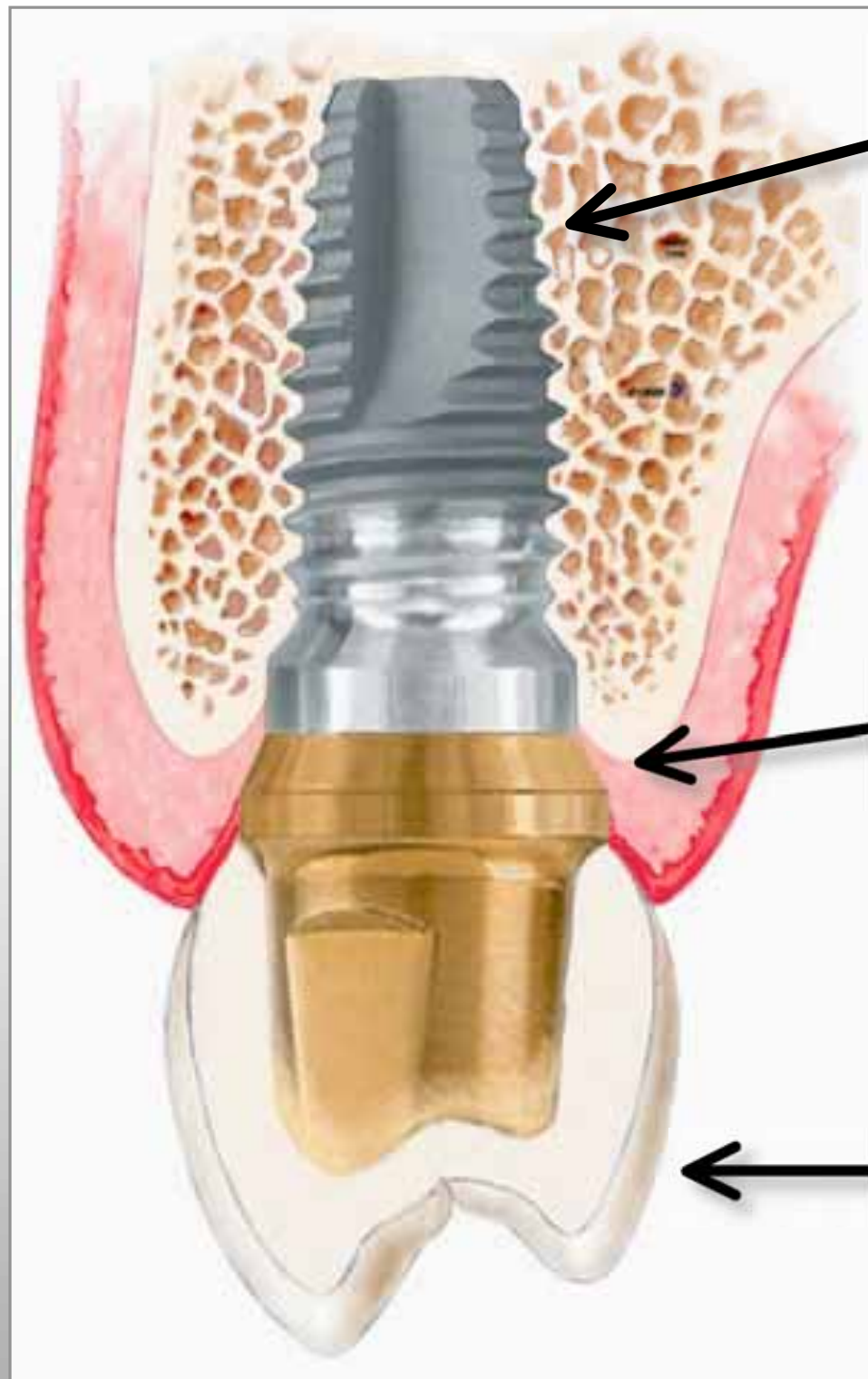
A tooth in need of a crown is prepared to receive a crown

A porcelain crown is fabricated and cemented to the tooth preparation

A tooth in need of a crown is prepared to receive a crown



A porcelain crown is fabricated and cemented to the tooth preparation or to the abutment







An implant is placed in the jawbone

An abutment is attached to the implant

A porcelain crown is fabricated and attached to the abutment

Why to use dental implants?

-  Because Dental implants are the **alternative to bridgework** for replacing missing teeth , avoiding the need to prepare natural vital teeth.
-  They are also the **alternative to dental adhesives** to retain full dentures, making them more stable and less painful
-  Because Dental Implants **prevent the bone loss** and changes of facial contours associated with Bone loss.
-  Because Dental Implants are a long lasting **more predictable solution**

Single Tooth Replacement

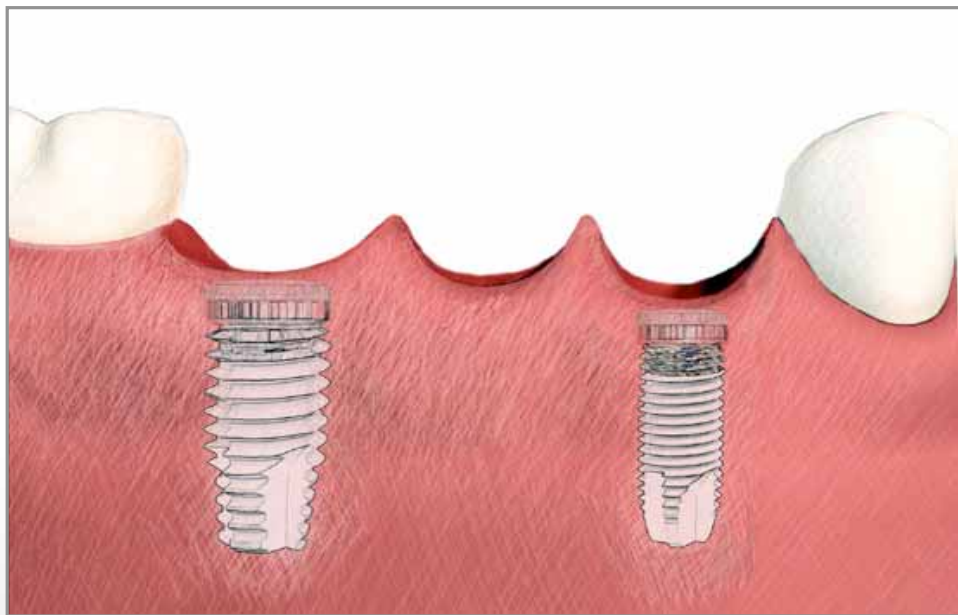
An implant is placed in bone and covered with a protective cap while it is allowed to heal. Depending on the amount of bone, the clinician may need to perform additional procedures to build up the bone.



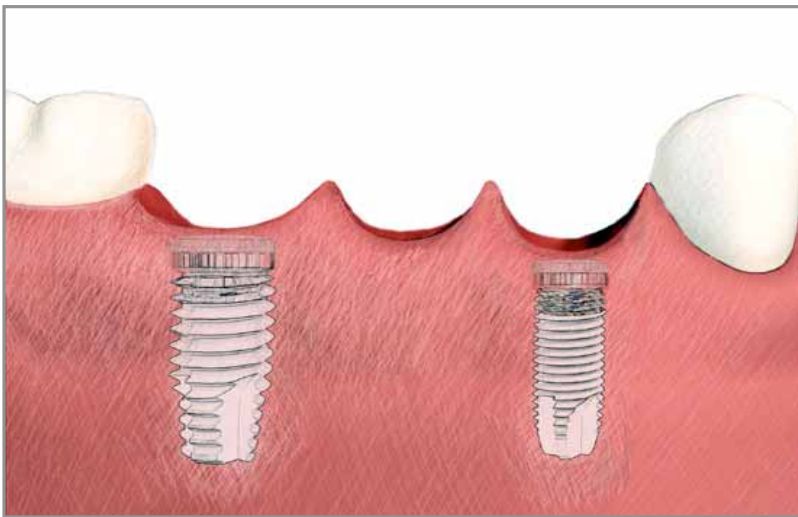


After healing, the implant is anchored in the bone. An abutment is attached to the implant. The abutment functions as the core for the replacement tooth..

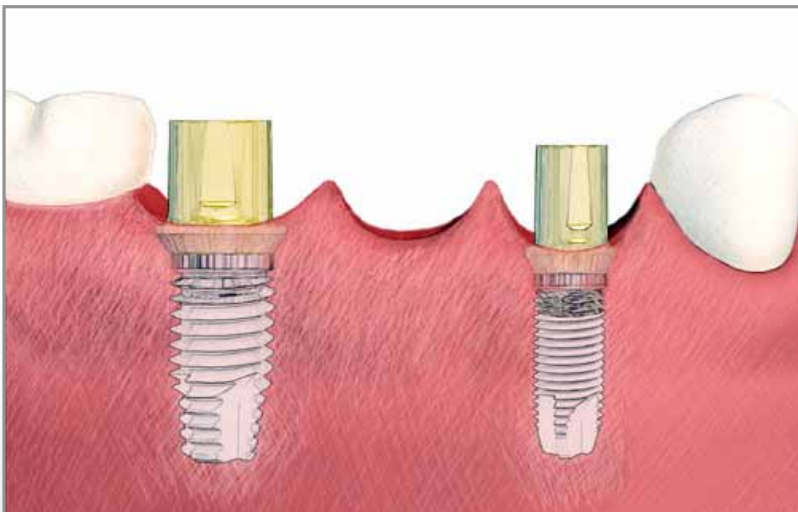
Multiple Tooth Replacement



- Dental implants are strong, and bond with bone so well, that one implant may not be needed for each tooth being replaced
- Your dentist will determine how many implants will be needed in each individual case



Implants used to support a bridge are placed and allowed to bond with the surrounding bone in the same manner as a single tooth implant.



When the implant is securely anchored in the bone, the healing abutments are removed and final abutments are attached to the implants. The final abutments function as the core of the replacement teeth that are attached directly to the implants.



The bridge is designed to be affixed to the implants. The result is an aesthetic appearance that mimics natural teeth, with similar function. There are no unsightly metal hooks or clasps.

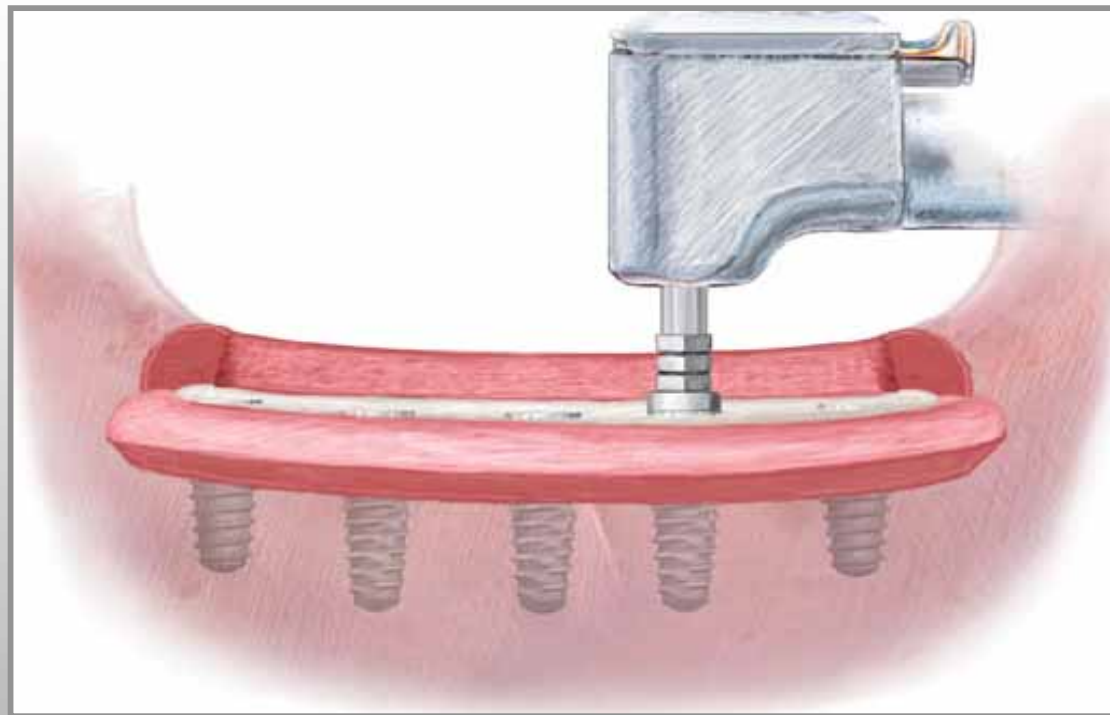
The Fully Edentulous Patients Total Teeth Replacement

- To replace all the missing teeth in a **Fixed way**:
 - 5 implants in the mandible
 - 6-8 implants in the maxilla are needed
- To replace all missing teeth in a **Removable way**:
(dentures held in place by implants)
 - 2 implants in the mandible
 - 4 implants in the maxilla

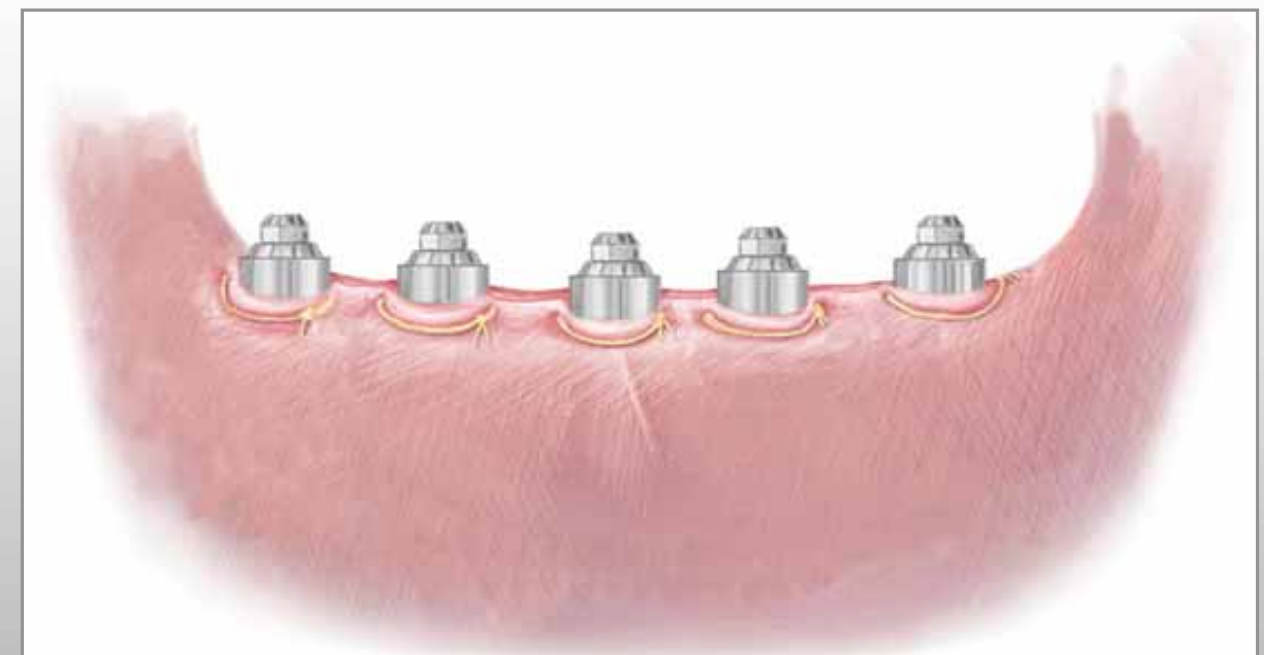
Implant Supported Fixed Denture



The supporting implants are generally placed toward the front of the mouth. Here, the bone is more dense. Implants generally have the highest success rates in the front part of the lower jaw.



Implants in place immediately after surgical placement.



Protective caps have been placed. Patient is ready to go home.

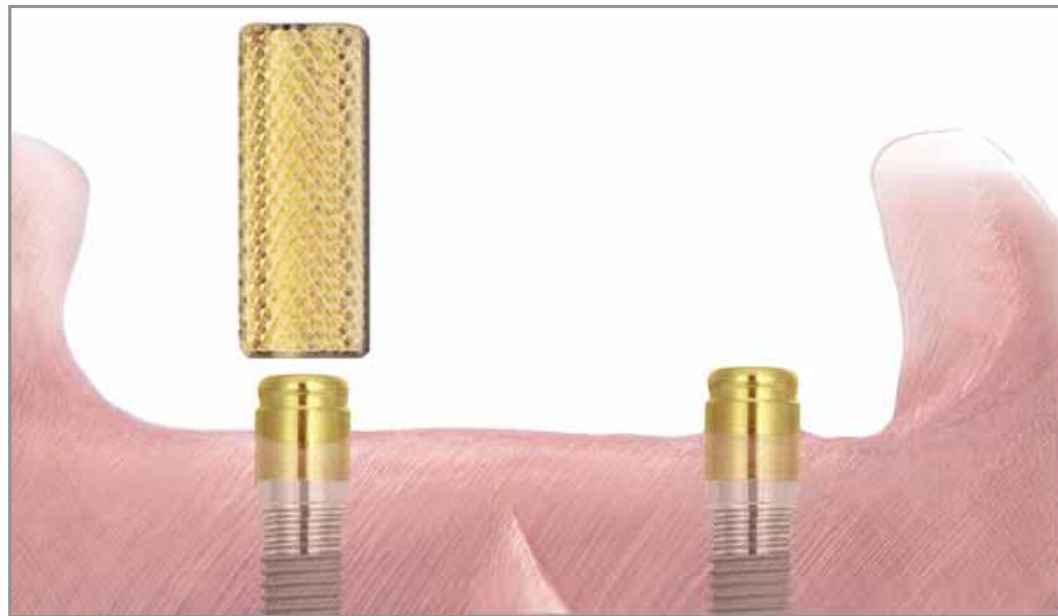


Dental implants generally require approximately 2 months to bond with the bone. The implants are then securely anchored into the jaw bone. Abutments are then attached to the implants. The denture is then attached to the abutments which support the denture. The denture is NOT removable by the patient.



If necessary, the dentist will be able to remove the denture. The denture is designed so that the patient will be able to keep the abutments and undersurface of the denture clean.

Implant Retained Removable Denture



Abutments that contain retentive elements can be placed directly into the implants. These will retain the overdenture in place.



This allows the denture to be removed for cleaning. Although the denture is removable, it remains firmly attached during normal functions, including eating and talking.